



**PALLET
WRAPPER**

TMD-P26B

MAJOR FEATURES

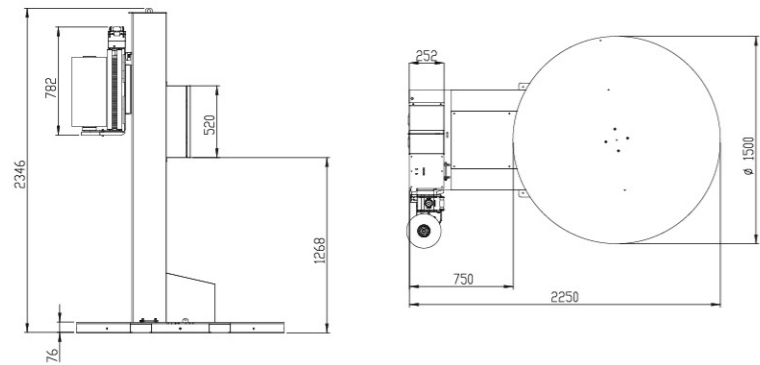
- ADJUSTABLE SPRING BRAKE WITH QUICK RELEASE
- TURNTABLE HOME POSITION
- SOFT START AND STOP
- ONE TOUCH AUTOMATIC PROGRAM
- TOP/BOTTOM WRAPS SELECTOR
 - (1) 3 BOTTOM WRAPS AND 2 TOP WRAPS
 - (2) 4 BOTTOM WRAPS AND 3 TOP WRAPS
- SAFETY SWITCH TO PREVENT FROM FOOT PINCH
- HEIGHT DETECTION BY PHOTO SENSOR

STANDARD SPECIFICATION

- MAX. WRAPPING HEIGHT : 2.2M
- MAX. TURNTABLE SPEED : 10RPM
- MAX. LADING WEIGHT : 1200KG
- TURNTABLE DIAMETER : 1500MM
- POWER SUPPLY : 100V/110V/220V/230V/240V., 50HZ/60HZ, 1-PHASE.
- POWER CONSUMPTION : 0.8kW

OPTION

- TURNTABLE DIA. : 1.65M (Max. Loading Weight: 1650KG)
- Wrapping Height : 2.6M, 3.0M
- Ramp



CARRIAGE

CONTROL PANEL

TMD-P26P

MAJOR FEATURES

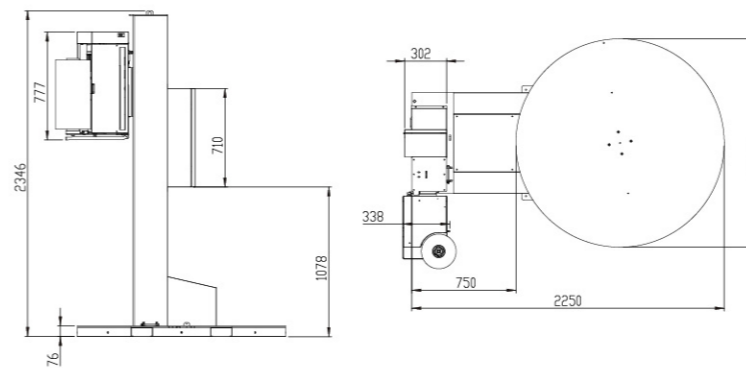
- 300% POWER PRE-STRETCH. 1 METER FILM PRE-STRETCH TO BE 4 METERS
- TURNTABLE HOME POSITION.
- SOFT START AND STOP.
- CHOICE OF AUTOMATIC/MANUAL MODES
- ADJUSTABLE TOP AND BOTTOM WRAP COUNTS.
- ADJUSTABLE WRAPPING TENSION/TURNTABLE SPEED/CARRIAGE SPEED.
- TROUBLE SHOOTING SHOWN ON SCREEN
- SAFETY SWITCH TO PREVENT FROM FOOT PINCH
- HEIGHT DETECTION BY PHOTO SENSOR

STANDARD SPECIFICATION

- MAX. WRAPPING HEIGHT : 2.2M
- MAX. TURNTABLE SPEED : 12RPM
- MAX. LOADING WEIGHT : 1650KG
- TURNTABLE DIAMETER : 1500mm
- POWER SUPPLY : 100V/110V/220V/230V/240V.,50/60HZ., 1-PHASE
- POWER CONSUMPTION : 1.2kW

OPTION

- TURNTABLE DIA. : 1.65M (Max. Loading Weight: 1650KG)
- TURNTABLE TYPE : HOURSE SHOE 1.65M (Max. Loading Weight: 1200KG)
- Wrapping Height : 2.6M, 3.0M
- Ramp
- OTHER POWER PRE-STRETCH RATIO ON REQUEST



CARRIAGE

CONTROL PANEL